

### THREADING

Brows ..... **£8.00** Lip ..... **£8.00** Chin ..... **£8.00** Sides of Face ..... **£8.00**

### TINTING

Lash Tint ..... **£11.50** Brow Tint ..... **£9.00**  
Brow Tint & Shape ..... **£14.50** Brow Tint & Lash Tint ..... **£14.50**

**EYE PACKAGE** ..... **£18.50** (Lash Tint/Brow Tint & Brow Tidy)

**Patch test is required 48 hours before any tinting treatment.**

### WAXING - Roller System

Full Leg Wax ..... **£23.50** Full Leg & Bikini Wax ..... **£27.50** Half Leg Wax ..... **£17.50**  
Bikini Wax ..... **£13.50** Underarm Wax ..... **£13.50** Back Wax ..... **£24.50**  
Forearm Wax ..... **£15.00** Brow Wax ..... **£6.50** Lip Wax ..... **£6.50**  
Chin Wax ..... **£6.50** Lip & Chin Wax ..... **£10.00**

### EPIL PRO

It harnesses the power sound of energy which travels precisely down the hair shaft striking and degenerating the papillary cells at the root without any damage to the surrounding skin.

Any hair and skin colour. eg dark hair and dark skin, or fair, grey or red hair.

Chin ..... **£15** Upper Lip ..... **£15** Lip and chin ..... **£20**

### MANICURE BAR

**Bespoke Signature Manicure** ..... **£30**

Hand soak/exfoliation/cuticle care/nails filed & shaped/hand massage/polish application.

**Express Manicure** (File/buff/cuticle care/polish application) ..... **£20**

**Colour Change** ..... **£10**

Base strengthening/polish application/quick drying top coat

### NAIL WRAPS

Dipping acrylic powder to natural nails ..... **£23.50** ..... **add shellac £30**

### WEEK ENDERS

False nail application with choice of polish application ..... **£20** ..... **add shellac £30**

### CND SHELLAC GEL POLISH

CND Shellac Polish Hands ..... **£23.50** with soak off ..... **£26.50**

CND Shellac Polish Toes ..... **£20.00** with soak off ..... **£23.00**

Hands & feet together ..... **£40.00** with soak off ..... **£45.00**

### PEDICURE BAR

**Bespoke Signature Pedicure** ..... **£30**

Salt & fizz soak/exfoliation/rasping/cuticle care/clip & file nails/foot massage/polish application.

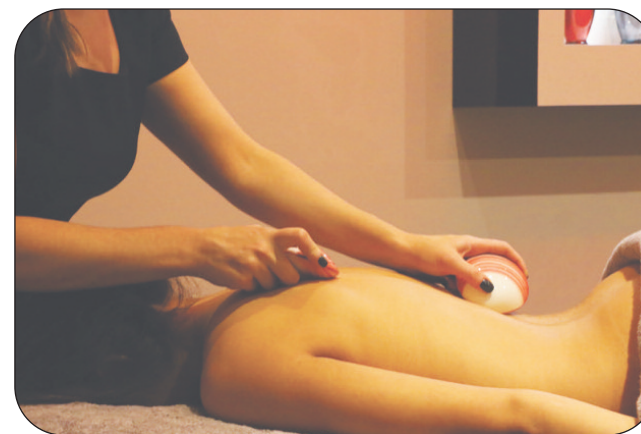
**Express Pedicure** ..... **£20**

Steam towels/exfoliation/cuticle care/polish application.

**Colour change** (Base/Colour/Top coat) ..... **£10**

# Gemini

## HEALTH & BEAUTY CENTRE



*Tuesday 10.30 am - 7.00 pm*

*Wednesday 9.30 am - 3.00 pm*

*Thursday 9.30 am - 7.00 pm*

*Friday 9.30 am - 7.00 pm*

*Saturday 9.30 am - 3.00 pm*

*Telephone: 01922 684878*

*Website: [www.geminihealthandbeauty.co.uk](http://www.geminihealthandbeauty.co.uk)*

**REBALANCING & DE STRESSING Package ..... £45**

Create your very own pamper hour. You can choose up to **3 treatments**

\*Head Massage \*Hot stone back massage \*Relaxing facial \*Reflexology

\*DCZ Face Reflexology

**EAR CANDLING ..... £28.95 (40 mins)**

Ear candling involves a specially designed hollow candles being inserted just inside the ear canal.

Suffer with ..... Headaches ~ Migraines ~ Hay Fever ~ Snoring ~ Compacted Ear Wax ~ Tinnitus ~ Sinusitis

**HEAD/SCALP/NECK MASSAGE ..... £30 (30 mins)**

Busy mind, head aches then this treatment will relax you relieving that tension.

**REFLEXOLOGY ..... £39.95 (45 mins)**

Rebalance mind body and soul with a reflexology session, application of pressure massage to reflex points in your feet, includes steam towels and relaxing foot massage.

**THAI FOOT MASSAGE ..... £39.95 (45 mins)**

Massage of feet & lower legs both invigorating and deeply relaxing using foot sticks to stimulate reflex points & therapeutic massage.

**We also offer Reiki & Chakra balancing when booking please ask for more details on adding to your massage or reflexology treatment.**

**GEMINI Signature Steam Salt & Massage ..... £45 (1 Hour)**

Relaxing in our wooden steam cabin & Sauna to deep cleanse & relax those aching muscles, following with a full body salt scrub & Dry Brush, completing with a relaxing hot stone back massage.

**SAUNA SUITE**

Sauna & Steam Treatment room hire ..... **£15 Per Person (1 Hour)**

**UNIVERSAL CONTOUR CLASSIC BODY WRAP ..... £55 (90 mins)**

Your Classic Body Wrap treatment comes with the guarantee that you will lose at least 6 inches or pay nothing. The combination of unique natural Classic Clay Solution and specialist body wrapping techniques are what make our Classic Body Wrap so successful. The clay solution draws out toxins whilst the wrapping technique actively compressing the soft fatty tissues. This creates an instant inch loss, firming and body sculpting effect.

**UNIVERSAL CONTOUR EXPRESS BODY WRAP ..... £25 (40 mins)**

AntiCelluliteWrap ~ Bust Wrap ~ Arm Wrap ~Tummy Wrap ~Buttock Wrap

**ST TROPEZ SPRAY TANNING**

Full Body Tan ..... **£25** Leg Tan ..... **£15**

Classic Mist ~ Dark Mist ~ Sensitive Mist ~ Express Tan

**SIGNATURE PRESCRIPTION FACIAL ..... £39.95 (40 mins)**

Your therapist will perform a skin health check, deep cleanse, exfoliation, pressure point massage to face neck & shoulders, finishing with application of a treatment mask for your skins needs.

**FACE REFLEXOLOGY**

DCZ Face Reflexology to include Welcome Head Massage ..... **£39.95 (55 mins)**

DCZ Face Reflexology ..... **£29.95 (30 mins)**

Face Reflexology refers to points and zones on the face which correspond to the rest of the body, Dien Chan Zone Face Reflexology is the most relaxing therapy you may ever experience.

Give back your inner peace and self care balance.

**FREEZE DRIED COLLAGEN FACIAL & BACK MASSAGE ..... £49.95 (55 mins)**

The ultimate in hydrating and nourishing treatment with the added effects of the most advanced toning and facial lifting massage. Includes a relaxing hot stone back massage.

**CRYO COLD HAMMER FACIAL ..... £39.95 Course of 3 ..... £100 (30 mins)**

Cooling temperatures to calm and give a lifting and tightening effect to your face.

**MICRODERMABRASION FACIAL ..... £39.95 Course of 3 ..... for £100 (30 mins)**

A deep exfoliating facial using aluminium oxide crystals jetted at the skin to create a smooth, renewed and refreshed complexion.

**MICRO CURRENT LIFTING FACIAL ..... £39.95 course of ..... £100 (40 mins)**

Using tiny electrical micro current to lift and re contour your facial muscles.

**COOLING & SOOTHING EYES ..... £32.95 (30 mins)**

Using acupressure massage to relieve muscle tension in the brow and eyes, including soothing cold stone facial massage to relieve tired eyes with application of freeze dried eye mask, all while enjoying a relaxing neck and shoulder massage.

**SWEDISH MASSAGE**

Relaxing Back Massage ..... **£30 (30 mins)** Swedish Back Massage ..... **£40 (45 mins)**

Full Body Massage ..... **£45 (55 mins)**

**HOT STONE MASSAGE**

Using warm basalt stones, this is sure to melt away tension & relieve tight tense muscles, great to boost the immune system and most of all out your body and mind into a state of deep relaxation.

Hot Stone Back Neck and Shoulder Massage ..... **£34.95 (30 mins)**

Hot Stone Back Neck and Shoulder Massage ..... **£45.00 (45 mins)**

**LAVA SHELL WARMING BACK MASSAGE ..... £40 (45 mins)**

Warming lava shells back massage uses a gentle heat in porcelain shells together with hands on, promoting a feeling of relaxation. A beautiful pampering warm experience.

**HYDROTHERM HEATED WATER BED MASSAGE ..... £49.95 (55 mins)**

Hydrotherm is a very beneficial relaxing form of massage which is carried out with the client lying face up on two cushions that are filled with warm water, heated between 35-40 degrees. This way of massage is ideal for those clients who may find it uncomfortable lying on their front.

**Choose your massage on the hydrotherm**

\*Back Massage \*Neck & Shoulder \*Head Massage

\*Full Body Massage \*Reflexology \*Face Massage

**Hydrotherm Pregnancy Massage ..... £49.95 (55 mins)**

Lying on warm cushions of water to ease those aches and pains, enjoy a full body massage and facial to recharge and take out that time out you so deserve.

**Hydrotherm Oncology Massage ..... £49.95 (55 mins)**

You are truly in caring hands with our light touch therapies for clients going through Cancer treatment.